

ZOOMLION



ZOOMLION, VISION CREATES FUTURE

ZOOMLION ANHUI INDUSTRIAL VEHICLE CO.,LTD

ZOOMLION ANHUI INDUSTRIAL VEHICLE CO.,LTD

Add: No.2 Nanwei Road, Area of High-tech Development Zone, Wuhu, Anhui Province, China
Post: 241002 TEL: +86-553-3020328 Website: www.zoomlion.com

All information based at the time of printing and subject to change without notice.
Pictures may be shown with optional equipment. All rights reserved.



ZOOMLION

SD15-20/SD30-50 Rough Terrain Forklift



4WD



Powerful



Reliable design



Compact
4WD
SD50

ZOOMLION Rough Terrain
Forklift Introduction



2WD
SD15/20

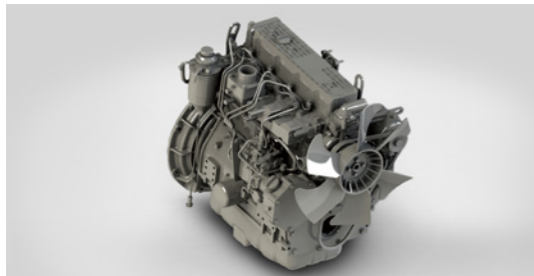


4WD
SD30/35



Rough Terrain Forklift

Rough Terrain Forklift, flexible and efficient, rated load 1500-5000kg



Power

Standard: Yanmar 4TNE98;
Option: S4S, Kubota Euro 5 engine.



Suspension system

The connection between the roof guard and the forklift body adopts the rubber damper instead of the traditional rigid design, which greatly reduces the vibration of the machine and provides a more stable driving on the rugged terrain. It also reduces operator fatigue.



Wide View Mast

The wide view mast provides excellent visibility, making the driver's vision more open during operation. The work efficiency and safe operation of forklift are improved.



High quality, large grain tires

Industrial tyres with large texture and bottom contact area have higher stability and lifting capacity in harsh environments.



100% differential lock

100% differential lock, power shift gearbox and differential lock provide power under extreme working conditions, and can be used in severe weather and rough environment.



High ground Space

Provides greater mobility, enabling the machine to operate freely under harsh conditions.



Reversing horn

Standard reverse horn.



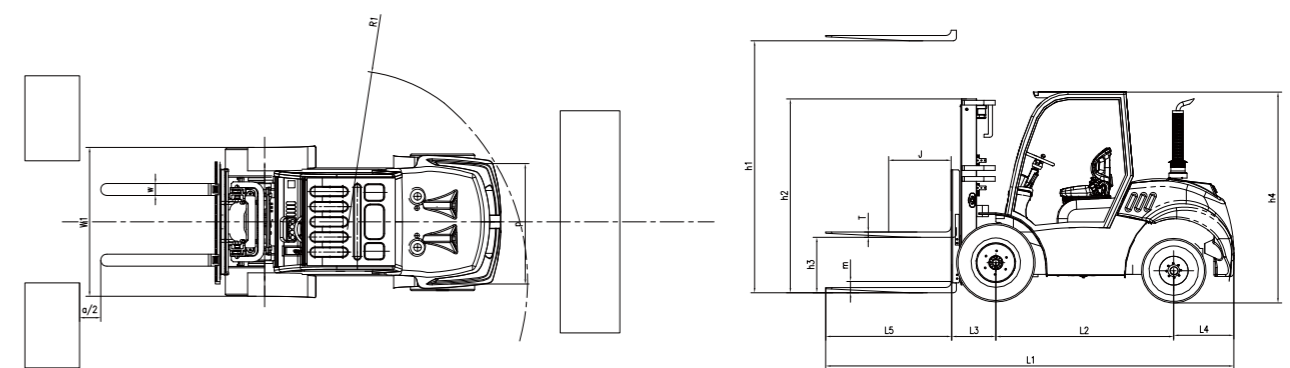
OPS system

The whole vehicle is equipped with OPS system as standard to sense the working state of the operator. When the driver leaves the seat during operation, the driving power will be cut off to prevent accidents.

Configuration List

	2WD		4WD			
	1.5T	2T	3T	3.5T	3T	3.5T
YES <input checked="" type="radio"/> / NO <input type="radio"/>						
Floated Overhead Guard	<input type="radio"/>	<input type="radio"/>	<input checked="" type="radio"/>	<input checked="" type="radio"/>	<input checked="" type="radio"/>	<input checked="" type="radio"/>
4WD-2WD Rocker Switch	<input type="radio"/>	<input type="radio"/>	<input checked="" type="radio"/>	<input checked="" type="radio"/>	<input checked="" type="radio"/>	<input checked="" type="radio"/>
Industrial Tyres (F/R)	10.0/75-15.3 Rear23x8.5-12NHS		14-17.5-14PR Rear10.0/75-15.3			
Suspension Pedal	<input type="radio"/>	<input type="radio"/>	<input checked="" type="radio"/>	<input checked="" type="radio"/>	<input checked="" type="radio"/>	<input checked="" type="radio"/>
Truck Width (mm)	1300	1300	1710	1710	1710	1710
Loaded Into 20GP Container	2210		2270			
External Type Steering Cyinder	<input type="radio"/>	<input type="radio"/>	<input checked="" type="radio"/>	<input checked="" type="radio"/>	<input checked="" type="radio"/>	<input checked="" type="radio"/>
With Prefilter	<input type="radio"/>	<input type="radio"/>	<input checked="" type="radio"/>	<input checked="" type="radio"/>	<input checked="" type="radio"/>	<input checked="" type="radio"/>
LED Lights	<input checked="" type="radio"/>	<input checked="" type="radio"/>	<input checked="" type="radio"/>	<input checked="" type="radio"/>	<input checked="" type="radio"/>	<input checked="" type="radio"/>
Safety Start System						
OPS system	<input checked="" type="radio"/>	<input checked="" type="radio"/>	<input checked="" type="radio"/>	<input checked="" type="radio"/>	<input checked="" type="radio"/>	<input checked="" type="radio"/>
Engine	kubota V2403					
Gradeability	15	20	20	20	20	20
Gradient	15	20	20	20	20	20
Min.Turning Radius (mm)	2350	2350				
Transmission Model	YQXD30	YQXD30	YQXD30	YQXD30	SD35-T	SD35-T
Differential Lock Type	<input type="radio"/>	<input type="radio"/>	<input checked="" type="radio"/>	<input checked="" type="radio"/>	<input checked="" type="radio"/>	<input checked="" type="radio"/>

Machine 2D Graph



Machine Parameters (2WD)

General	Manufacturer	/	ZOOMLION	ZOOMLION	ZOOMLION	ZOOMLION
	Model	/	SD15	SD20	SD30	SD35
	Power type	/	Diesel	Diesel	Diesel	Diesel
	Rated capacity	kg	1800	2000	3000	3500
	Load centre	mm	500	500	500	500
	Self weight	kg	3200	3800	5050	5300
Characteristic & Dimension	Lifting height	mm	3000	3000	3000	3000
	Free lift	mm	135	135	200	200
	Fork size (L*W*T)	mm	1070x122x40	1070x122x40	1070x125x45	1070x125x50
	Fork regulating range (Min./Max.)	mm	240-1020	240-1020	240-1200	240-1200
	Mast tilt angle (F/R)	Deg	6 / 12	6 / 12	10 / 12	10 / 12
	Front overhang	mm	485	485	605	605
	Rear overhang	mm	473	473	625	625
	Min.ground clearance	mm	130	130	210	210
	Length to face of fork (without fork)	mm	2610	2610	3115	3115
	Overall width	mm	1300	1300	1690	1690
	Mast lowered height	mm	2070	2070	2295	2295
	Mast extended height (with backrest)	mm	4070	4070	4402	4402
	Overhead guard height	mm	2210	2210	2280	2280
	Turning radius	mm	2350	2350	3530	3530
	Min.right angle stacking aisle width(a12=1000,b12=1200)	mm	4020	4020	5200	5200
Min.right angle stacking aisle width(a12=1200,b12=800)	mm	3785	3785	5035	5035	
Performance	Travel (Laden/Unladen)	km/h	18/20	18/20	17/19	17/19
	Lifting(Laden)	mm/s	410	410	390	390
	Lowering(Laden)	mm/s	450	450	440	440
	Max.Drawbar pull (Laden)	KN	18	18	18	18
	Max.Gradeability (Laden)	%	20	20	20	20
Tyre	Tyre (Front)	/	10.0/75-15.3	10.0/75-15.3	14-17.5L-14PR	14-17.5L-14PR
	Tyre (Rear)	/	23x8.50-12NHS	23x8.50-12NHS	10.0/75-15.3	10.0/75-15.3
	Tread (Front/Rear)	mm	1165 / 1065	1165 / 1065	1250 / 1270	1250 / 1270
	Wheelbase	mm	1650	1650	1885	1885
Power & Transmission	Battery Voltage/Capacity	V/Ah	12/90	12/90	12/90	12/90
	Engine Model	/	V2403-CR-T-EW04	V2403-CR-T-EW04	V2403-CR-T-EW04	V2403-CR-T-EW04
	Engine Manufacture	/	kubota	kubota	kubota	kubota
	Rated output/r.p.m.	Kw	42.6	42.6	42.6	42.6
	Rated torque/r.p.m.	N.m	195.6 / 1500	195.6 / 1500	195.6 / 1500	195.6 / 1500
	No.of cylinder	/	4	4	4	4
	Bore*Stroke	mm	87x102.4	87x102.4	87x102.4	87x102.4
	Displacement	L	2.434	2.434	2.434	2.434
	Fuel tank capacity	L	60	60	70	70
	Transmission Manufacture	/	ZOOMLION	ZOOMLION	ZOOMLION	ZOOMLION
	Transmission Type	/	Electrohydraulic	Electrohydraulic	Electrohydraulic	Electrohydraulic
	Stage (F/R)	/	Front1 Rear1	Front1 Rear1	Front1 Rear1	Front1 Rear1
Operating pressure	Mpa	17.5	17.5	17.5	17.5	

Machine Parameters (4WD)

General	Manufacturer	/	ZOOMLION	ZOOMLION	ZOOMLION
	Model	/	SD30	SD35	SD50
	Power type	/	Diesel	Diesel	Diesel
	Rated capacity	kg	3000	3500	5000
	Load centre	mm	500	500	600
	Self weight	kg	5050	5300	8650
Characteristic & Dimension	Lifting height	mm	3000	3000	3000
	Free lift	mm	200	200	220
	Fork size (L*W*T)	mm	1070x125x45	1070x125x50	1320*150*720
	Fork regulating range (Min./Max.)	mm	240-1200	240-1200	0-650
	Mast tilt angle (F/R)	Deg	10 / 12	10 / 12	6 / 12
	Front overhang	mm	605	605	800
	Rear overhang	mm	625	625	880
	Min.ground clearance	mm	195	195	350
	Length to face of fork (without fork)	mm	3115	3115	3860
	Overall width	mm	1690	1690	2280
	Mast lowered height	mm	2295	2295	2800
	Mast extended height (with backrest)	mm	4402	4402	4280
	Overhead guard height	mm	2280	2280	2600
	Turning radius	mm	3530	3530	4800
	Min.right angle stacking aisle width(a12=1000,b12=1200)	mm	5200	5200	6520
	Min.right angle stacking aisle width(a12=1200,b12=800)	mm	5050	5050	6310
Performance	Travel (Laden/Unladen)	km/h	17/19	17/19	18/20
	Lifting(Laden)	mm/s	390	390	300
	Lowering(Laden)	mm/s	440	440	360
	Max.Drawbar pull (Laden)	KN	35	18	33
	Max.Gradeability (Laden)	%	20	20	20
Tyre	Tyre (Front)	/	14-17.5L-14PR	14-17.5L-14PR	16/70-24-24PR
	Tyre (Rear)	/	10.0/75-15.3	10.0/75-15.3	10.00-20-16PR
	Tread (Front/Rear)	mm	1250 / 1270	1250 / 1270	1175 / 1070
	Wheelbase	mm	1885	1885	2200
Power & Transmission	Battery Voltage/Capacity	V/Ah	12/90	12/90	24/240
	Engine Model	/	V2403-CR-T-EW04	V2403-CR-T-EW04	4BTA3.9-C80
	Engine Manufacture	/	kubota	kubota	Dongfeng Cummins
	Rated output/r.p.m.	Kw	42.6	42.6	60
	Rated torque/r.p.m.	N.m	195.6 / 1500	195.6 / 1500	360/2000
	No.of cylinder	/	4	4	4
	Bore*Stroke	mm	87×102.4	87×102.4	102*120
	Displacement	L	2.434	2.434	3.9
	Fuel tank capacity	L	70	70	90L
	Transmission Manufacture	/	ZOOMLION	ZOOMLION	Zhongchuan Transmission
	Transmission Type	/	Electrohydraulic	Electrohydraulic	Electrohydraulic
	Stage (F/R)	/	Front1 Rear1	Front1 Rear1	Front1 Rear1
Operating pressure	Mpa	17.5	17.5	20	

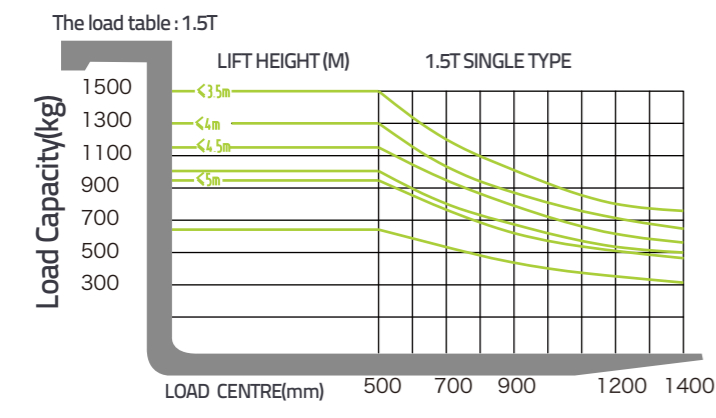
Wide view 2-stage mast

Model	Max.fork height mm	Mast retraction height					Free lift (Without backrest)					Mast extended height (with backrest)					Capacity at max.height					Masttilt Angle f/r		
		1.5T	2T	3T	3T	5T	1.5T	2T	3T	3.5T	5T	1.5T	2T	3T	3.5T	5T	1.5T	2T	3T	3.5T	3.5T	1.5T-2T	3T-3.5T	5T
M300	3000	2070	2070	2295	2295	2800	130	130	200	200	100	4105	4105	4490	4490	4280	1500	2000	3000	3500	5000	6/12	10/12	6/12
M350	3500	2320	2320	2545	2545	3050	130	130	200	200	100	4605	4605	4990	4990	4780	1500	2000	3000	3500	5000	6/12	10/12	6/12
M400	4000	2580	2580	2845	2845	3300	130	130	200	200	100	5105	5105	5490	5490	5280	1300	2000	3000	3500	5000	6/12	10/12	6/12
M450	4500	2870	2870	3095	3095	3550	130	130	200	200	100	5605	5605	5990	5990	5780	1250	1800	2600	2850	5000	6/6	10/12	6/12
M500	5000	3120	3120	3345	3345	3800	130	130	200	200	100	6105	6105	6490	6490	6280	1000	1300	2100	2200	5000	6/6	10/12	6/12
M550	5500	3420	3420	3645	3645	4050	130	130	200	200	100	6605	6605	6990	6990	6780	800	1000	1650	1850	5000	3/6	6/6	6/12
M600	6000	3670	3670	3895	3895	4300	130	130	200	200	100	7105	7105	7500	7500	7280	600	700	1100	1400	5000	3/6	6/6	6/12

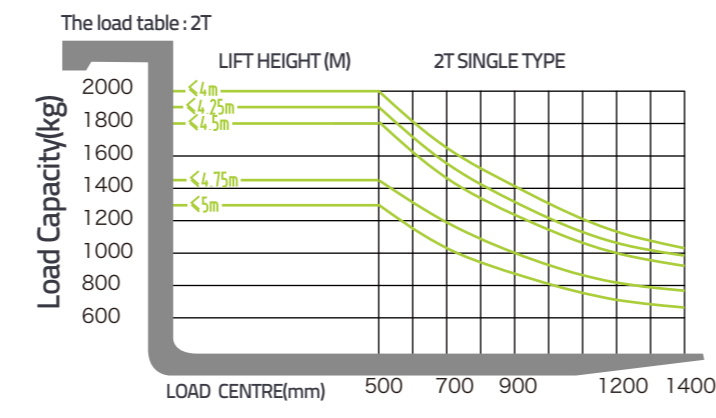
Full free 3-stage mast

Model	Max.fork height mm	Mast retraction height					Free lift (Without backrest)					Mast extended height (with backrest)					Capacity at max.height					Masttilt Angle f/r		
		1.5T	2T	3T	3T	5T	1.5T	2T	3T	3.5T	5T	1.5T	2T	3T	3.5T	5T	1.5T	2T	3T	3.5T	3.5T	1.5T-2T	3T-3.5T	5T
S400	4000	1975	1975	2105	2105	2335	872	872	808	808	1000	5105	5105	5490	5490	5450	1500	2000	2900	3200	5000	6/6	10/12	6/12
S450	4500	2140	2140	2270	2270	2502	1067	1067	973	973	1000	5605	5605	5990	5990	5950	1250	1750	2450	2850	5000	6/6	10/12	6/12
S480	4800	2240	2240	2370	2370	/	1167	1167	1073	1073	/	5905	5905	6205	6205	/	1150	1650	2250	2500	/	6/6	10/12	/
S500	5000	2305	2305	2435	2435	/	1322	1322	1138	1138	/	6105	6105	6490	6490	/	950	1450	2000	2150	/	6/6	10/12	/
S550	5500	2470	2470	2600	2600	/	1397	1397	1303	1303	/	6605	6605	6990	6990	/	600	1100	1550	1850	/	3/6	6/6	/
S600	6000	2690	2690	2820	2820	/	1617	1617	1523	1523	/	7105	7105	7500	7500	/	300	800	1100	1400	/	3/6	6/6	/

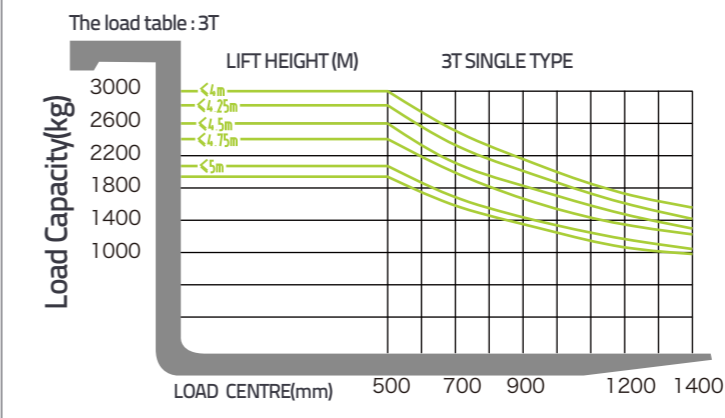
1.5T Capacity Chart



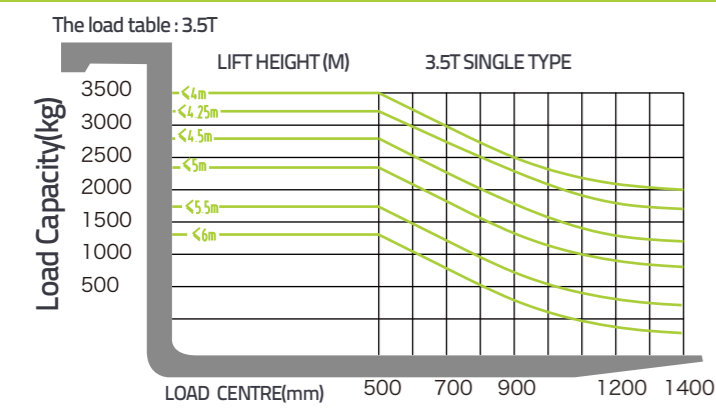
2T Capacity Chart



3T Capacity Chart



3.5T Capacity Chart



5T Capacity Chart

